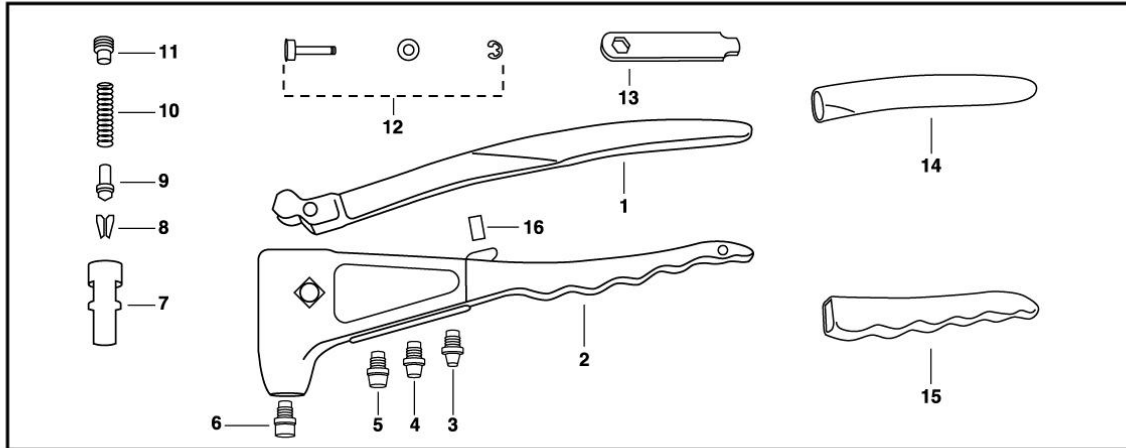




marson *HP-3 Professional HAND RIVET TOOL*
39002

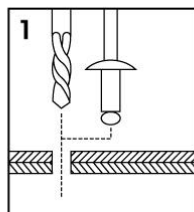
PARTS LIST



NO.	PART NO.	PART NAME	NO.	PART NO.	PART NAME
1	M39190	UPPER HANDLE	10	M39125	JAW PUSHER SPRING
2	M39191	ALUMINUM BODY	11	M39126	RETAINING SCREW
3	M39131	NOSEPIECE, 3/32" or 2.4mm	12	M39195	FULCRUM PIN
4	M39128	NOSEPIECE, 1/8" or 3.0/3.2mm			FULCRUM PIN BEARING
5	M39130	NOSEPIECE, 5/32" or 4.0mm			SNAP RING
6	M39129	NOSEPIECE, 3/16" or 4.8/5.0mm	13	M39137	WRENCH
7	M39122	COLLET CASE	14	M39192	UPPER GRIP
8	M39123	JAWS (2-PC TYPE)	15	M39193	LOWER GRIP
9	M39124	JAW PUSHER	16	M39194	SHOCK ABSORBER

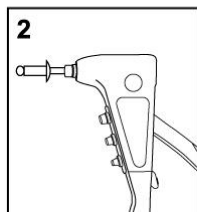
NOTES: Please order parts by Part Number and Part Name.

OPERATION INSTRUCTIONS



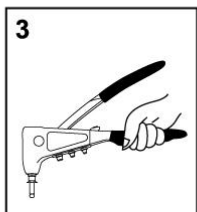
1

After selecting the correct Rivet for installation, drill the recommended hole size.



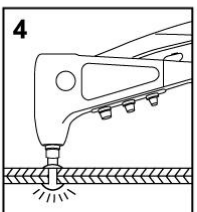
2

Open Tool Handle fully and insert Rivet Mandrel all the way into Tool Nosepiece.



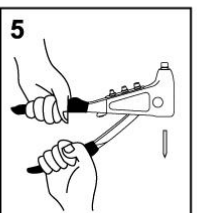
3

Tool Working Nosepiece can hold Rivet Mandrel in any position for convenient use.
NOTE Hold the Aluminum Body, not the Upper Handle, to keep Rivet Mandrel.



4

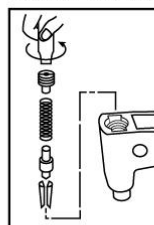
Insert Rivet Body into the drilled hole completely. Squeeze Tool Handle until Rivet Mandrel breaks off. If more than one squeeze is required, open Tool Handle fully and squeeze again.



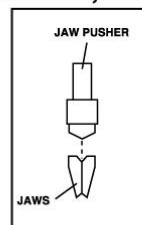
5

Finally open Tool Handle fully to eject spent Mandrel from Tool, either from Working Nosepiece or from upper side.

HOW TO CHANGE JAWS, JAW PUSHER, ETC. PARTS



- Close Tool Handle completely.
- Remove Retaining Screw with Wrench, then remove Jaw Pusher Spring, Jaw Pusher and Jaws from Collet Case.
- Clean jaws. If Jaw teeth are worn out, replace them. Before assembly, lubricate back side of Jaws with a film of light machine oil.



4. Reverse the above steps to reassemble, making sure that bevelled end of Jaw Pusher fits into the bevel provided by the Jaws.

WARNING

